

# **BRAZORIA COUNTY**

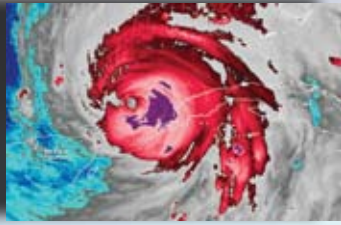
THIS BOOKLET CONTAINS VITAL INFORMATION TO ASSIST YOU THROUGH HURRICANE SEASON. KEEP THIS GUIDE READILY AVAILABLE THROUGHOUT THE SEASON AND BY YOUR SIDE DURING AN EVACUATION.

# **2010 HURRICANE PREPAREDNESS GUIDE**

## **ARE YOU PREPARED?**

**211 • EVACUATION PLANS  
EMERGENCY INFORMATION AND • COMMUNITY PLANNING**

CONTAINS NEW REQUIRED INFORMATION FOR 2010



Dear Citizens of Brazoria County,

This brochure is being provided to you, to ensure your education in being prepared for the upcoming 2010 Hurricane Season. Taking only 3 minutes of your busy schedule to read this brochure, and then applying the information could save you, a member of your family or your neighbors' life!

Preparedness is the key to protecting your family and property. Please make your plans now. By doing so, you will ensure that you and your family will survive any hurricane that may threaten our area. By knowing your vulnerability and what actions you should take will prepare you to handle most emergency situations.

This year we are hosting multiple hurricane seminars throughout the county. Please plan on attending one in your area. The format has changed and the length of the programs is much shorter to conserve your time. 90 minutes is all that is required for you to attend. See below for a location near you.

Sincerely,  
Brazoria County Emergency Managers

**Brazoria County  
2010  
Hurricane  
Preparedness  
Seminars**

---

**Angleton**

June 1, 2010 – 6:30 p.m.  
Recreation Center - 1601 N Valderas Street

**Brazoria**

June 7, 2010 – 6:30 p.m.  
Heritage Foundation - 202 West Smith

**Pearland**

June 12, 2010 – 10:00 a.m.  
Community Center - 3523 Liberty

**Freeport**

June 15, 2010 – 6:30 p.m.  
River Place - 733 Mystery Harbor Lane

**Lake Jackson**

June 17, 2010 – 6:30 p.m.  
Civic Center Ballroom – 333 Hwy 332, East

**Alvin**

June 21, 2010 – 6:30 p.m.  
Alvin Community College – 3300 Mustang Road

# Table of Contents

## BRAZORIA COUNTY 2010 HURRICANE PREPAREDNESS GUIDE

### IF YOU NEED A RIDE OUT OF TOWN

211 Registry ..... 3  
 Evacuation HUBS in Brazoria County ..... 4

### IF YOU HAVE YOUR OWN TRANSPORTATION

Evacuation Plans ..... 5  
 Evacuation Zones ..... 6  
 Public Shelters ..... 7  
 Animal Evacuations ..... 7  
 Evacuating Livestock ..... 8

### GETTING PREPARED

Sign Up to Get Informed ..... 8  
 Prepare For Stormwater ..... 8  
 Prepare Your Home ..... 9  
 Prepare Your Vehicle ..... 9  
 Family Disaster Check List ..... 10  
 Important Information Form ..... 11  
 Communication Information ..... 12

This booklet contains vital information to assist you through hurricane season. It is strongly recommended that you keep this guide readily available throughout the season and by your side during an evacuation.

**ARE YOU  
PREPARED?**  
**We're Here to Help.**



IF YOU NEED A RIDE OUT OF TOWN

**2-1-1 Registry**

**DIAL 2-1-1 TO REGISTER FOR A RIDE**

Brazoria County resident - If you have special health care or transportation needs, you need to make extra efforts to get ready for hurricane season. Remember, hurricane season officially begins June 1 and continues through November 30.

Operators answering the phones at 2-1-1 are prepared to help you register for transportation and special assistance now, before hurricane season begins.

**If you have special health care needs, register by dialing 2-1-1:** Gulf coast residents with special health care needs (including those who are disabled or medically fragile) who live in evacuation zones and do not have friends or family to help in an evacuation should register for a ride in advance by dialing 2-1-1. The 2-1-1 registry must be dialed IN ADVANCE. Call 211 before a storm is in the Gulf. This service is for people who cannot drive themselves or make transportation arrangements.

**If you need transportation, register with 2-1-1:** If you do not have a car or other vehicle, and you cannot get a ride with friends, neighbors or family, register IN ADVANCE for a ride by dialing 2-1-1. If those attempts fail, contact your local emergency coordinators office (numbers found on pages 12 - 14).

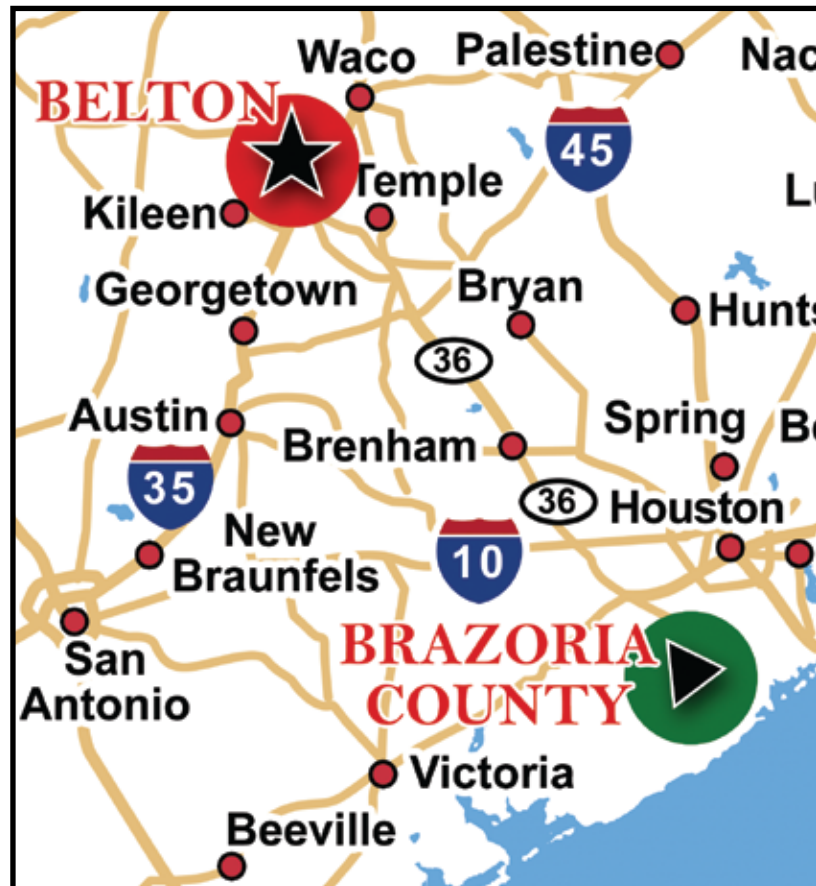
In the event of an evacuation, individuals who have registered with 2-1-1, will need to meet at an evacuation HUB.

To allow hearing impaired folks to register for 211 help before an event please email or text your contact info to: [211@brazoria-county.com](mailto:211@brazoria-county.com)



Dial 2-1-1

**Don't wait  
Register NOW!**



**2009 Hurricane Season is June 1 - November 30. PLAN TODAY!**

# IF YOU NEED A RIDE OUT OF TOWN

## Evacuation HUBS in Brazoria County

### WHAT IS A HUB?

A HUB is a meeting location for residents who:

- Need public transportation during an evacuation
- Registered with 2-1-1 for public transportation

At this location, residents will be checked in and bused to public shelters in Belton Texas. **FIREARMS ARE NOT PERMITTED.**

Brazoria County has been divided into two HUBS. **If you need public transportation during an evacuation, you will need to get to one of these HUBS\*.**

- |   |  |
|---|--|
| <p><b>1 PEARLAND</b><br/>New 9th Grade Center<br/>(Old Glenda Dawson High School)<br/>4717 Bailey Road<br/>Pearland, TX</p> | <p><b>2 ANGLETON FAIRGROUNDS</b><br/>901 S Downing Rd<br/>Angleton, TX</p> |
|---|--|

**\* If you need assistance getting to one of these HUBS, locate your local emergency coordinators to find staging locations.**

**Evacuation Destination:**

**★ EXPO CENTER**  
301 West Loop 121  
Belton, Texas 76513



### WHAT SHOULD I BRING WITH ME?

- You **MUST** bring your driver's license or state issued picture ID.
- Medications for at least 10 days
- Toiletries, snacks, and 5 days worth of clothing
- No more than two pieces of luggage and one carry-on bag per person.
- Household pets (dog/cat) in a sturdy plastic or metal cage/transport device. (no reptiles or aggressive animals will be allowed).

### WHAT IS NOT ALLOWED IN A PUBLIC SHELTER?

Alcoholic beverages, weapons, and illegal drugs are not allowed in public shelters.

### PUBLIC TRANSPORTATION AND ANIMAL EVACUATIONS

If you are utilizing county transportation at a HUB location, there are several rules that must be followed. These rules are imposed to ensure the safety of everyone and will be enforced without exception. **HUB Coordinators have final say over all pet transports.**

- Only non aggressive household pets will be permitted. No reptiles or farm animals.
- Up to two pets per household will be allowed on the bus. If you feel you **MUST** take more than two pets, please contact your city's local emergency manager **BEFORE** an evacuation is called.
- All animals **MUST** be transported and housed in a sturdy plastic or metal cage/transport device. No cardboard or partly enclosed devices will be allowed.
- Animals must remain secured in the travel device at **ALL TIMES** while on the bus.
- All animals must have current shot records.
- Animal owners are responsible for supplying food and water for their animals.
- Please understand we are not liable for any losses or injuries your animal may sustain while being evacuated.

### WILL MY PET RIDE WITH ME?

As a general rule, pets will be transported with the owner. However, if a situation dictates, they may be transported in a separate vehicle.

# IF YOU HAVE YOUR OWN TRANSPORTATION

## Evacuation Plans

If you think you need to evacuate, leave as early as possible.

### HOW DO I KNOW WHEN TO EVACUATE?

Mandatory evacuation orders will come from your local officials. Evacuations will be based on zip codes. Please be prepared to leave immediately.

See pages 12 - 14 for specific information pertaining to your city's communication of recommended evacuations.

### SHOULD I EVACUATE?

Local officials will make mandatory evacuation decisions before a storm makes landfall. Hurricanes are extremely unpredictable and can become much more dangerous in a matter of hours. It is NOT safe to wait. **Plan to LEAVE EARLY.**

### WHERE SHOULD I GO?

You may evacuate to any city you choose. Brazoria County residents have been assigned Belton, Texas for **public shelters**. If you do not have hotel reservations or family you can stay with, you may evacuate to the public shelters. See map on page 3.

### WHAT ROUTE SHOULD I TAKE?

There are no mandatory routes you must take when evacuating from your city. In fact there are several different routes you may take. When weather is good, take your family on an outing to check routes and become familiar with roadways.

The State has designated evacuation routes: SH-36, SH-288, SH-6, I-45, SH-290, HWY-59. If you choose to take an alternate route, essential services such as food, fuel, etc. are not guaranteed.

Please understand that depending on the strength of the storm, contra-flow lanes might be open on SH-45, I-10, and SH-290 thirty-six (36) hours prior to the arrival of gail force winds. Plan your evacuation routes carefully, **(having more than one route planned)** realizing that contro-flow lanes have priority over all other routes.

**It is NOT safe to wait!**

### WHEN EVACUATING YOU SHOULD:

- Coordinate your departure with the people who will be traveling with you. Notify an out-of-area person of your evacuation plans.
- Make arrangements for your pets.
- Pack your disaster supplies kit into your vehicle.
- Secure your home.
- Double check your evacuation route and leave.



### I DON'T WANT TO EVACUATE!

Should you choose to stay, please remember there are **NO SHELTERS in Brazoria County**. There will be **NO SERVICES available to you (sewer, water, etc.)**. Hospitals will close, ambulances will not run, and police and fire cannot respond until the storm passes.

### When Should I Return?

- Just because you hear from a friend or neighbor that their house is OK, does not mean it is safe for you to return.
- Local emergency managers will utilize: (1) local media (2) Blackboard Connect CTY and (3) websites to notify residents when its safe to return. If you do not have access to any of the above resources, contact your city's emergency management coordinator's office or the county's emergency manager's office **before returning**. This information can be found on pages 12- 14. As a last resort, if your local or county emergency managers office is unavailable, you may call Bell County at 254-933-5587
- Do not venture onto roads until you have been advised that they are passable and safe.



# IF YOU HAVE YOUR OWN TRANSPORTATION

## FUEL

- Keep your fuel tanks half full during hurricane season.
- Motorists should fill their tanks before evacuating.
- TxDOT has worked with the private sector to assure maximum-possible fuel availability during an evacuation.
- TxDOT courtesy vehicles will be patrolling major evacuation routes for stranded motorists.

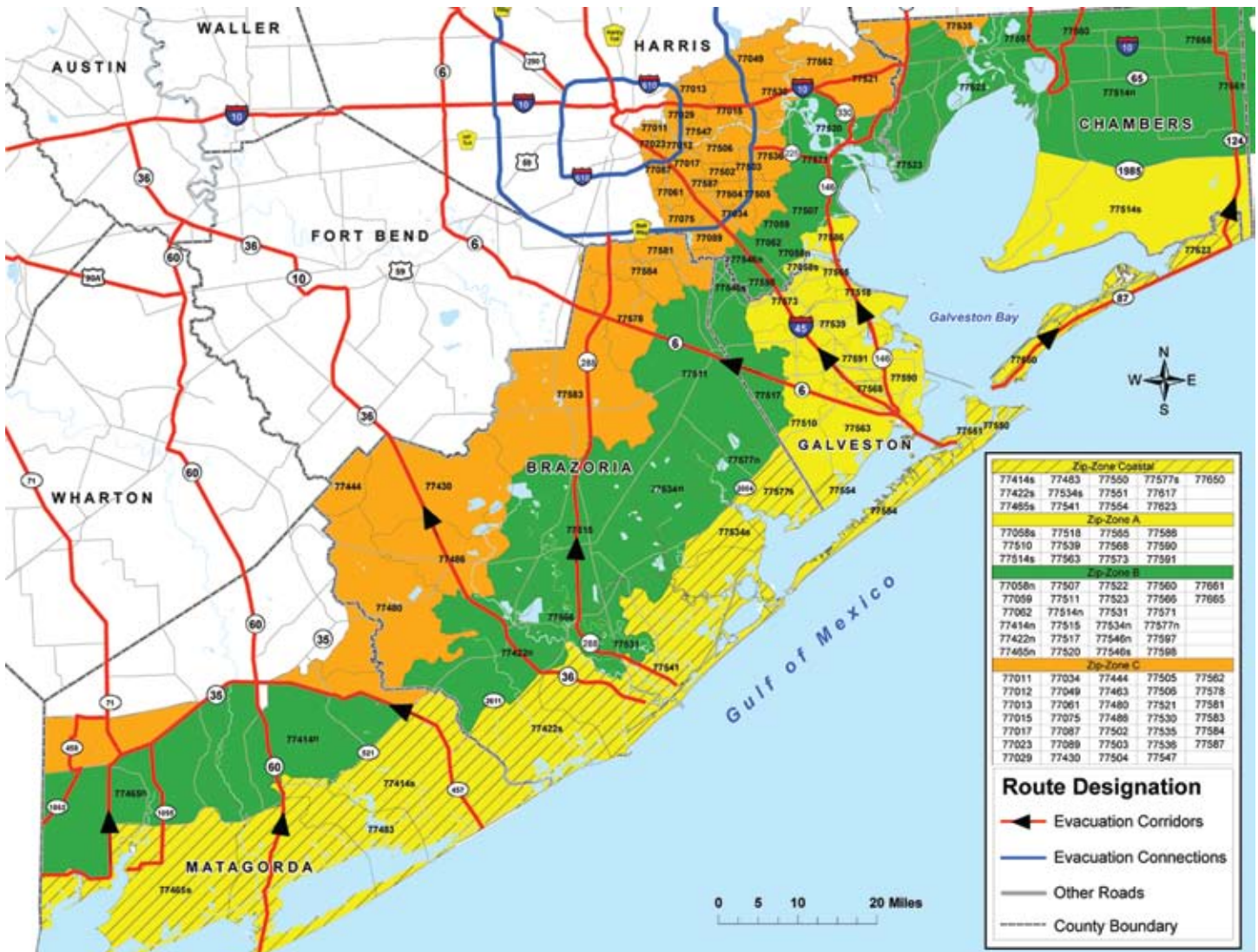
## KEY TELEPHONE NUMBERS

- The number to call for ROAD CONDITIONS OR COURTESY VEHICLES on state highways is **1-800-452-9292**.
- If you have an emergency, call **9-1-1**.



**Mandatory Evacuations will be based on zip codes. Be prepared to leave immediately as your zip code is called.**

# Evacuation Zones



## IF YOU HAVE YOUR OWN TRANSPORTATION

If you have your own ride out of town, but need a place to stay, you may go to the Expo Center in Belton, Texas. See page 3 for a map.

### Public Shelters

#### IF I PLAN ON GOING TO A PUBLIC SHELTER, WHAT ADDITIONAL ITEMS SHOULD I TAKE?

Public shelters are basic facilities that provide temporary housing for evacuees. Most shelters do not have beds or cots, so you will probably be sleeping on the floor. So pack as if you were going camping. Bring:

- Sleeping pads or air mattresses
- Blankets or a sleeping bag for each person
- Robe & shower shoes
- Books, cards, games and QUIET toys for children

#### WHAT IS NOT ALLOWED IN A PUBLIC SHELTER?

Alcoholic beverages, weapons, and illegal drugs are not allowed in public shelters.

#### FIREARMS ARE NOT PERMITTED

#### SHOULD I CARRY FOOD AND DRINKS IN MY CAR?

Stopping for food or drinks during a large-scale evacuation may significantly delay you in getting to your destination. Some restaurants and stores along hurricane routes may be closed and those that are open are likely to be very crowded. Additionally, once you leave the evacuation route to purchase food or drinks, it may be difficult to re-enter the flow of traffic.

#### WHAT CAN I DO TO HELP OTHERS?

Check on friends and neighbors to make sure they have transportation or to see if they need help in getting essential items together so they can be ready to evacuate. Assist them if you can. If you cannot, help them get in touch with the local emergency management office.

### Animal Evacuations

The inland shelter locations will be equipped to shelter most animals of all types. You may be restricted to the number and type of animals that will be sheltered. If you have questions, please contact your local emergency manager (pages 12-14). As a general rule, pets will be sheltered separately, with the exception of service animals that must stay with their owners. All animals must be housed in a sturdy plastic or metal cage. All food/medication must be provided by owner.



DEAR PERSONS,  
IF I'M RIDING WITH YOU,  
PLEASE DON'T FORGET TO  
PACK MY... THANKS,

- Food, Water
- Non-tippable food and water containers
- Leash, Harness or Carrier
- Records of Vaccinations
- Medications



#### EVACUATING TIPS

- Keep your vehicle in good repair with at least a half a tank of fuel.
- Check on friends and neighbors who may have special needs.
- Prepare your disaster supplies kit NOW and take it with you when you evacuate. (see page 10 for check list)
- Secure your home quickly and evacuate when asked to do so.

**YOUR OWN TRANSPORTATION (CONTINUED)**

## Evacuating Livestock

### WHERE TO GO?

If you have friends or family who have a place to board your livestock, that is your best choice. Public shelters are temporary, lasting maybe a couple of days. When evacuating it's best to plan for long term, rather than a couple of days. Our assigned public shelter at the Bell County Expo in Belton, Texas can accommodate shelter for 150 cattle, 179 horses, and 300 head of sheep, swine and goats combined (high value livestock—horses, show animals, youth animal projects, etc.). The Expo is located on I-35 at exit #292 in Belton, Texas.

When evacuating contact Mr. Dirk Aaron, as a courtesy call, at (254) 933-5305 before leaving home to let Bell County know you're coming. Other shelters for high value livestock are available throughout the state, but contact information on those sites isn't released until 120 to 72 hours before a storm makes landfall. As this information is received it will be posted on the Brazoria County website at [www.brazoria-county.com](http://www.brazoria-county.com) and at the Emergency Management office at (979) 864-1064. Keep in mind that public shelters provide only shelter and water. Feed and hay are the owners responsibility. Public shelters require all equine to have current vaccinations and coggins test paperwork.



Expo Center in Belton, Texas. Map on page 3.

**For Brazoria County's complete Hurricane Preparedness Guide for Livestock, log on to: <http://brazoria-tx.tamu.edu>**

## GETTING PREPARED

### Sign Up to Get Informed PUBLIC CALL AND NOTIFICATION SYSTEMS



Many cities in Brazoria County utilize a public call and notification system. You can have messages sent directly to your cell phone. Please check your city to inquire if this service is available in your community.



You can now receive Brazoria County news via e-mail.

Sign up for the areas that interest you:

- Emergency Management
- Health News and Alerts
- Sheriff Department News and Alerts



Your e-mail will only be used to contact you for official Brazoria County business. Sign up Now! Go to: <http://www.brazoria-county.com/subscribe.asp>

## Prepare For Stormwater

### AID STORMWATER IMPACT

Unnecessary flooding of homes and businesses often occurs because the surrounding drainage channels cannot function properly due to the buildup of sediment and other debris. In the event of a hurricane or other major storm it is critical that all drainage channels are clean and able to function properly to help reduce flooding in your community. You can do your part to reduce the risk of flooding by following these steps.

- Never blow/sweep grass, leaves, dirt or debris into storm inlets.
- While operating a construction site, always install and maintain proper structural controls such as silt fencing to reduce the amount of sediment being discharged from your site.
- Keep all roadside ditches free of any debris such as tree limbs or garbage.
- Immediately report any illegal dumping activities in and along drainage channels.

By following these guidelines you can not only help reduce the risk of flooding in your community, but also protect the quality of stormwater being discharged to your local waterways year round. For more information please visit the Brazoria County Stormwater Quality Coalition website at [www.ms4web.com/bcswqc](http://www.ms4web.com/bcswqc).

## GETTING PREPARED

### Prepare Your Home

Here are some steps you can take to protect your property **BEFORE A STORM HITS:**

- Find out the elevation of your property and check floodplain maps.
- Check your insurance coverage. Most homeowner insurance policies do not cover flood damage.
- Learn about the National Flood Insurance Program.
- Find out if your home meets current building code requirements for high winds. Structures that meet current high-wind provisions have a better chance of surviving violent windstorms.
- Install commercial shutters or prepare 5/8 inch plywood panels for your windows.



- Garage doors are frequently the first feature in a home to fail. Reinforce garage doors so that they are able to withstand high winds.
- Assess your property to ensure that landscaping and trees do not become a wind hazard. Trim all dead wood, and weak branches or overhanging branches from all trees. Certain trees and bushes are vulnerable to high winds and any dead tree near a home is a hazard.
- Move outside items to safety, such as patio furniture, plants and grills.
- Put valuable documents in waterproof containers and take them with you when you evacuate.
- Turn off electricity at the main circuit breaker or fuse box to protect appliances from power surges and reduce the risk of live dangling wires after the storm.
- If the house is supplied with natural or propane gas, turn it off at the meter or tank.
- Remove perishable items from your refrigerator and freezer if you evacuate.
- Make a final walk-through inspection before closing the door.

### Prepare Your Vehicle

- Fill up with fuel before you leave town. It's smart to keep your tank at least half full during hurricane season.
- Check your vehicle's fluid levels and ensure there is adequate coolant in the radiator.
- Don't forget your tires. Check for proper air pressure because hot road surfaces are rough on tires. Be sure that your spare tire has air and that you have the proper equipment to change your tire. Ensure you have a jack and lug wrench in your vehicle and know where they are in the vehicle. Your owner's manual should have instructions for changing tires and flats.
- Make sure to carry water and non-perishable food; enough for you and your passengers in case you become stranded.
- If you are stranded, stay with your vehicles and use emergency flashers. Tie a white cloth on the antenna or door handle and raise the hood.
- Have a working flashlight and extra batteries in your vehicle.



# Family Disaster Check List

## ESSENTIALS:

- This booklet
- Battery-operated radio
- Flashlight
- Extra Batteries
- First Aid Kit (one for your home and one for each car)

**- Do not include candles. Candles cause more fires after a disaster than anything else.**

## WATER:

- 3 gallons per person, minimum, in a food-grade, plastic container
- Additional water for sanitation

## FOOD:

- Minimum 5-day supply of non-perishable food that requires no refrigeration or preparation and little or no water
- Dry cereal
- Peanut butter
- Canned fruits
- Canned vegetables
- Canned Juice
- Ready-to-eat canned meats
- Ready-to-eat soups (not concentrated)
- Quick energy snacks, graham crackers

## SANITATION:

- Disinfectant
- Household chlorine bleach
- Soap, liquid detergent
- Toilet paper, towelettes, paper towels
- Personal hygiene items
- Cloth towels (at least 3)
- Feminine supplies
- Plastic bucket with tight lid
- Plastic garbage bags, ties (for personal sanitation use)

## CLOTHING & BEDDING:

- Plastic garbage bags, ties
- Sunglasses
- Rain gear
- Sturdy shoes or work boots
- Blankets or sleeping bags
- Complete change of clothing and footwear per person

## TOOLS AND SUPPLIES

- Whistle
- Aluminum Foil
- Crowbar
- Compass
- Paper, Pencil
- Plastic sheeting
- Medicine dropper
- Needles, thread
- Signal Flare
- Matches in a waterproof container
- Assorted nails, wood screws
- Pliers, screwdriver, hammer
- Plastic storage containers
- Heavy cotton or hemp rope
- Cash, traveler's checks, change
- Map of the area
- Non-electric can opener, utility knife
- Cell phone with charger
- Mess kits, or paper cups, plates and plastic utensils
- Tape, duct tape and plumber's tape or strap iron
- Patch kit and can of seal-in-air for tires
- Shut off wrench, to turn off household gas & water

## FOR BABY:

- Formula
- Diapers
- Bottles
- Medication
- Powdered milk
- Baby food

## FOR PETS:

- Food, water
- Non-tippable food and water containers
- Leash, harness or carrier
- Records of vaccinations
- Pet medications

## IMPORTANT DOCUMENTS:

- Important telephone numbers
- Record of bank account numbers
- Family records (birth, marriage, death certificates)
- Inventory of household valuables
- Copy of will, insurance policies, contracts, deeds, stock and bonds
- Records of credit card account numbers and companies
- Copy of passport, social security cards, and immunization records

## FAMILY MEDICAL NEEDS:

- Insulin
- Prescription drugs in original containers
- Heart and high blood pressure needs
- Denture needs
- Extra eye glasses
- Contact lenses and supplies

## ENTERTAINMENT:

- Games & books

## YOU MAY WANT TO INCLUDE:

Family photos, jewelry and select irreplaceable personal items.

### Keep a small bag packed including a minimum of these items:

- Personal sized bottled water (one for each family member - don't forget your pets)
- Dry snacks
- One complete change of clothing and footwear per person
- Cash, traveler's checks and/or Credit cards, enough for food gas and lodging.
- Important documents
- Medications with original prescription containers
- Maps (evacuation routes and shelters)
- For Baby: formula, diapers, bottles, medication and powdered milk.
- For Pets: food, leash, harness, carrier, non-tippable food and water containers
- It's a good idea to have some travel games or books for the kids



**Make sure you have your vehicles' oil and fuel levels checked regularly during hurricane season!**

# Important Information

**Employer Name:** \_\_\_\_\_

Address: \_\_\_\_\_

Phone Number: \_\_\_\_\_

**Home Insurance Company:** \_\_\_\_\_

Address: \_\_\_\_\_

Phone Number: \_\_\_\_\_

Policy Number: \_\_\_\_\_

**Auto Insurance Company:** \_\_\_\_\_

Address: \_\_\_\_\_

Phone Number: \_\_\_\_\_

Policy Number: \_\_\_\_\_

**Other Insurance Company:** \_\_\_\_\_

Address: \_\_\_\_\_

Phone Number: \_\_\_\_\_

Policy Number: \_\_\_\_\_

**Family Doctor:** \_\_\_\_\_

Address: \_\_\_\_\_

Phone Number: \_\_\_\_\_

**Pediatrician:** \_\_\_\_\_

Address: \_\_\_\_\_

Phone Number: \_\_\_\_\_

**School/Daycare:** \_\_\_\_\_

Address: \_\_\_\_\_

Phone Number: \_\_\_\_\_

Contact: \_\_\_\_\_

**Bank Name:** \_\_\_\_\_

Address: \_\_\_\_\_

Phone Number: \_\_\_\_\_

Account Number(s): \_\_\_\_\_

**Credit Card Company:** \_\_\_\_\_

Address: \_\_\_\_\_

Phone Number: \_\_\_\_\_

Credit Card Number: \_\_\_\_\_

**Credit Card Company:** \_\_\_\_\_

Address: \_\_\_\_\_

Phone Number: \_\_\_\_\_

Credit Card Number: \_\_\_\_\_

**Pharmacy Name:** \_\_\_\_\_

Address: \_\_\_\_\_

Phone Number: \_\_\_\_\_

Prescription Number(s): \_\_\_\_\_

**Out of Town Contact:** \_\_\_\_\_

Phone Number: \_\_\_\_\_

**Important Numbers:** \_\_\_\_\_

**Important Numbers:** \_\_\_\_\_

**Important Numbers:** \_\_\_\_\_

**Important Numbers:** \_\_\_\_\_

\_\_\_\_\_

\_\_\_\_\_

\_\_\_\_\_

The most up to date information available is provided by your local city and county emergency management coordinators.

These are the lines of communication and your guide to emergency information and community planning. Call your local information providers listed on the following pages if you have questions regarding hurricane preparedness.

Please contact your city's emergency management coordinator's office or the county's emergency manager's office with questions or concerns. These numbers can be found below and on pages 13 & 14.

If your city is not listed, use the county numbers.

<b>BRAZORIA COUNTY</b>	<b>BRAZORIA COUNTY</b>
	Emergency Management eocstatus@brazoria-county.com www.brazoria-county.com
	Doc Adams Emergency Manager 24 Hour Hotline. . . . . 979-864-1064 . . . . . 979-388-1064 . . . . . 979-756-1064
<b>BELL COUNTY</b>	<b>BELL COUNTY</b>
	254-933-5587
<b>FEMA</b>	<b>FEMA</b>
	1-800-621-FEMA (3362)
<b>RED CROSS</b>	<b>RED CROSS</b>
	1-800-RED-CROSS (733-2767)
<b>UNITED WAY</b>	<b>UNITED WAY</b>
	1-800-971-6677
<b>SALVATION ARMY</b>	<b>SALVATION ARMY</b>
	1-979-233-5420

<b>ALVIN</b>	<b>ALVIN</b>
	Terry Lucas Emergency Manager . . . . . 281-388-4370 City Hall . . . . . 281-388-4200 Public Works. . . . . 281-388-4325 City Manager's Office . . . . . 281-388-4230 Mayor's Office . . . . . 281-388-4275 Cable Access Channel . . . . . Channel 16 Website: www.alvin.tx.citygovt.org www.alvinpolice.com Alvin ISD. . . . . 281-331-2320 KACC RADIO 89.7

<b>ANGLETON</b>	<b>ANGLETON</b>
	Mike Jones Emergency Manager . . . . . 979-849-2383 City Hall . . . . . 979-849-4364 City Manager's Office . . . . . 979-849-4364 Mayor's Office . . . . . 979-849-4364 Fire . . . . . 979-849-1265 Cable Access Channel. . . . . Channel 3 & 4 Website: www.angleton.tx.us www.angletonpd.net Angleton ISD . . . . . 979-849-8594

<b>BAILEY'S PRAIRIE</b>	<b>BAILEY'S PRAIRIE</b>
	Jo Maple Emergency Manager Website: www.baileysprairie.org

<b>BRAZORIA</b>	<b>BRAZORIA</b>
	Marcus Rabren Emergency Manager . . . . . 979-798-8002 City Hall . . . . . 979-798-2489 Teresa Borders City Manager . . . . . 979-798-2489 24 hr. Emergency Info. Line . . . . . 979-798-4636

COUNTY AND CITY COMMUNICATION INFORMATION

BROOKSIDE

BROOKSIDE

Buck Stevens
Emergency Manager . . . . . 281-546-9667
Craig Bailey, Mayor
City Hall . . . . . 281-485-4844
Ray Trevino
Police Chief . . . . . 281-850-0219
Craig Bailey
Fire Chief . . . . . 281-485-3088

CLUTE

CLUTE

Mark Wicker
Emergency Manager . . . . . 979-265-6194
Police Department...24 Hr Info. . . 979-265-6194
Clute City Hall. . . . . 979-265-2541
Gary Beverly
Interim City Manager . . . . . 979-265-2541
Website: www.ci.clute.tx.us
Brazosport ISD . . . . . 979-730-7000

DANBURY

DANBURY

City Hall/Police Department . . . . 979-922-1551
Vince Hatthorn
Emergency Manager . . . . . Ext.3
Rodger Thomas, Utility Department . . . . Ext.2
Theresa Farley, Animal Control . . . . . Ext.2
Kyle Webster
Fire Chief . . . . . 979-922-1176
Police Dispatch. . . . . 979-849-2441
Danbury ISD. . . . . 979-922-1218

FREEPORT

FREEPORT

Chris Motley
Emergency Manager . . . . . 979-233-5669
. . . . . or 979-233-KNOW
(Recorded Message)
City Hall . . . . . 979-233-3526
Police . . . . . 979-239-1211
Larry Mc Donald, Mayor
Jeff Pynes, City Manager
Website: www.freeport.tx.us
Brazosport ISD . . . . . 979-730-7000

HILLCREST VILLAGE

HILLCREST VILLAGE

Patricia Williams
Emergency Manger . . . . . 281-331-7339
Cell . . . . . 713-298-6425
City Office:
Monday - Friday 8 AM - 5 PM... 281-756-0577
City Office Not Open Following An Emergency
Mayor: Tom Wilson..... 281-748-7149
City Marshal: Patrick Caloway.. 713-562-8288
Website: www.cityofhillcrestvillage.org

JONES CREEK

JONES CREEK

William Tidwell
Marshal/Emergency Manager . . . 979-292-6393
Linda Shepard
City Administrator . . . . . 979-233-2700
Marshal's Dept . . . . . 979-233-3091
City Hall . . . . . 979-233-1826
Website: www.vil.jones-creek.tx.us

LAKE JACKSON

LAKE JACKSON

William Yenne
Emergency Manager . . . . . 979-415-2500
City Hall . . . . . 979-415-2400
Police Department . . . . . 979-415-2700
Website: www.lakejackson-tx.gov
Cable Access Channel . . . . . Channel 16
Brazosport ISD . . . . . 979-730-7000
Website: www.brazosportisd.net

LIVERPOOL

LIVERPOOL

Vanessa Lovett
Mayor/Emergency Manager . . . . 281-581-2233
Judy Dunbar
City Secretary . . . . . 281-581-2233
City Hall . . . . . 281-581-2233
Myles Hopkins
Police Chief . . . . . 281-393-1381
Police Dispatch. . . . . 281-331-9000

COUNTY AND CITY COMMUNICATION INFORMATION

MANVEL

**MANVEL**

David Smith  
Emergency Manager . . . . . 281-489-5290

Delores Martin, Mayor  
City Hall . . . . . 281-489-0630

Ralph Garcia, Police Chief  
Police Department . . . . . 281-489-1212

Cooper Lumsden, EMS . . . . . 281-489-6144

Steve DeBello, Fire Chief  
Fire Department . . . . . 281-692-0279

Website: [www.cityofmanvel.com](http://www.cityofmanvel.com)

OYSTER CREEK

**OYSTER CREEK**

Sgt. Rick Hempel  
Emergency Manager . . . . . 979-233-8481

Chief Tim Bradberry  
Police Department . . . . . 979-233-8481

Toby Guenter  
Public Works . . . . . 979-233-0243

C. Louis Guidry, Mayor  
City Hall . . . . . 979-233-0243

Chief Lonnie Carr, Jr.  
Fire Department . . . . . 979-233-2630

PEARLAND

**PEARLAND**

Roland Garcia  
Emergency Manager . . . . . 281-652-1954

City Hall . . . . . 281-652-1600

Tom Reid, Mayor  
Bill Eisen, City Manager

Police Department . . . . . 281-652-1100

Cable Access Channel . . . . . Channel 16

Website: [www.cityofpearland.com](http://www.cityofpearland.com)  
OR [cityofpearland.org](http://cityofpearland.org)

QUINTANA

**QUINTANA**

(Mon. - Fri. 8 a.m.- 4 p.m.) . . . . . 979-233-0848

Jerry Masters **After Hours**  
Emergency Manager . . . . . 979-233-1314  
cell . . . . . 979-236-6081

Wally Neely, Mayor . . . . . 979-236-3653

RICHWOOD

**RICHWOOD**

Glenn Patton  
Emergency Manager . . . . . 979-265-8157

City Hall . . . . . 979-265-2082

Website: [www.richwoodtx.gov](http://www.richwoodtx.gov)

SURFSIDE

**SURFSIDE**

Chief William R. Smith . . . . . 979-239-1151

Larry Davidson, Mayor . . . . . 979-239-1151

City Secretary's Office . . . . . 979-233-1531

Website: [www.surfside.org](http://www.surfside.org)

SWEENEY

**SWEENEY**

Devin Lemon  
Emergency Manager . . . . . 979-548-0697

Cindy King  
Asst. Emergency Manager . . . . . 979-548-3325

Interim City Manager . . . . . 979-548-3321

Information Line . . . . . 979-548-3330

After Hours/Emergency Line . . . . . 979-548-3111

Website: [www.ci.sweeny.tx.us](http://www.ci.sweeny.tx.us)

WEST COLUMBIA

**WEST COLUMBIA**

Chief Michael Palmer  
Emergency Manager . . . . . 979-345-5121

EOC . . . . . 979-345-7238

Debbie Sutherland, City Manager  
City Hall . . . . . 979-345-3123

Susan Neel  
CEMS Director . . . . . 979-345-2390

Website: [westcolumbiatx.org](http://westcolumbiatx.org)  
PD Website: [www.westcolumbiapolice.org](http://www.westcolumbiapolice.org)

## HOW CAN I HELP?

### BRAZORIA COUNTY CITIZEN CORPS

In large emergencies, first responders in our community can be overwhelmed quickly. Citizens on scene may need to take action to help save lives.

Citizen Corps provides training that will allow you to protect yourself, your family, and your neighbors.

The Brazoria County Citizen Corps has several key missions:

- Initial Neighborhood response
- Staffing Evacuation Hubs for an evacuation
- Performing Preliminary Damage Assessments
- Staffing the Emergency Management Call Center
- Assisting with distribution of food, water, and ice during emergencies
- Assist with staffing of shelters during disasters

**ALL TRAINING IS FREE**

**Positions for everyone! Great for groups and organizations! Sign up today!**

See our calendar at [www.homelandpreparedness.org](http://www.homelandpreparedness.org) or contact Homeland Preparedness Project at [info@homelandpreparedness.org](mailto:info@homelandpreparedness.org) or call 979-864-1646

### PEARLAND AREA CITIZENS CORPS (PACC)



Local emergency management agencies along with fire, police and EMS may not be able to meet all the demands for a community wide event. Factors such as the number of evacuees, victims, communication failures, and road blockages will challenge our community. People will have to rely on each other for help and volunteers will be needed for pre and post incident functions all year round.

PACC has openings in many programs for citizens that live in northern Brazoria and surrounding counties.

For more information, please contact Buck Stevens at [buckstevens@gmail.com](mailto:buckstevens@gmail.com) or 281-997-9777 or see our website at [www.pearlandcc.org](http://www.pearlandcc.org)

**Atlantic names to be used during the 2010 Hurricane Season**

Alex  
Bonnie  
Colin  
Danielle  
Earl  
Fiona  
Gaston  
Hermine  
Igor  
Julia  
Karl  
Lisa  
Matthew  
Nicole  
Otto  
Paula  
Richard  
Shary  
Tomas  
Virginie  
Walter

**Hurricane hazards come in many forms...  
be aware of all types of hurricane hazards and PREPARE YOURSELF!**



**STORM SURGE**



**TORNADOES**



**FLOODING**



**HIGH WINDS**